

Ashfield Junior School

Year 3 Home Learning Tasks Summer Term Week 6

Monday 18th May

English

Daily Practice:

Spellingframe

Topmarks: English KS2 Look cover write check:



Biography

This week we are going to return to our work on biography. Can you remember what a biography is? Can you remember what the features of a biography were?

Workington has been connected with many special people over the years and many of them made their home in the town. From the wealthy landowners from the Curwen family, well respected doctors such as Dr Anthony Peat, the pioneering Helena Thompson and Henry Bessemer and amazing rugby league stars Billy Ivison and Cec Thompson.

Research/Reading

We are proud of the ordinary people of our town who managed to achieve the extraordinary. Their stories inspire us and we want to continue their legacy in the future. Spend some time using the internet to see what you can find out about some of the people we have suggested or choose your own person. (who made a significant contribution to the town) Choose one person who interests you the most and see if you can answer the following questions:

- 1) When was the person alive?
- 2) Can you find any information about their early life?
- 3) What did they achieve?
- 4) Did you learn anything else about this person?
- 5) How will they be remembered?

The following websites might help you: <http://www.helenathompson.org.uk>
<https://www.allerdale.gov.uk/en/local-history-heritage-travel-and-tourism/past-people-allerdale/>

24-hour Clock

Notes and Guidance

Children are introduced to telling the time on a 24-hour digital clock for the first time.

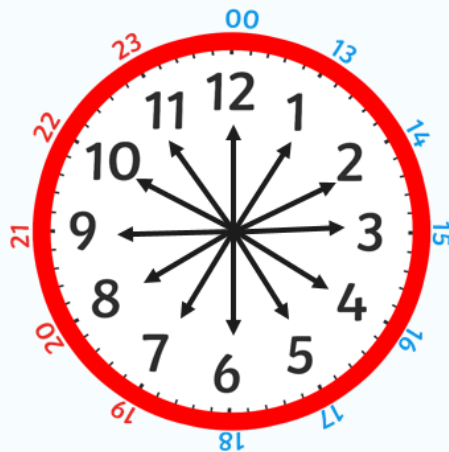
Children spend time looking at analogue and digital clocks at various times throughout the day, in order to compare what is the same and what is different.

Mathematical Talk

Using the 12-hour clock, is the time an a.m. or a p.m. time?

What will the number representing the hour be in 24-hour clock time? How do you know if it will be less than 12 or more than 12?

What will the minutes be in 24-hour time? Where can you count from? When does the number of minutes become 0 again on a 24-hour clock display?



On a 24 hour clock, once we get past 1pm we add 12 hours on to the time shown on the clock face.

twinkl.com

24 Hour Digital Clocks

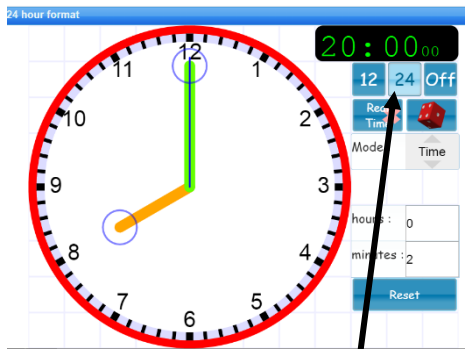


24 hour digital clocks also have an hour and minute display, separated by a colon.

The hours will always be before the colon. The hours go from 0 to 23.

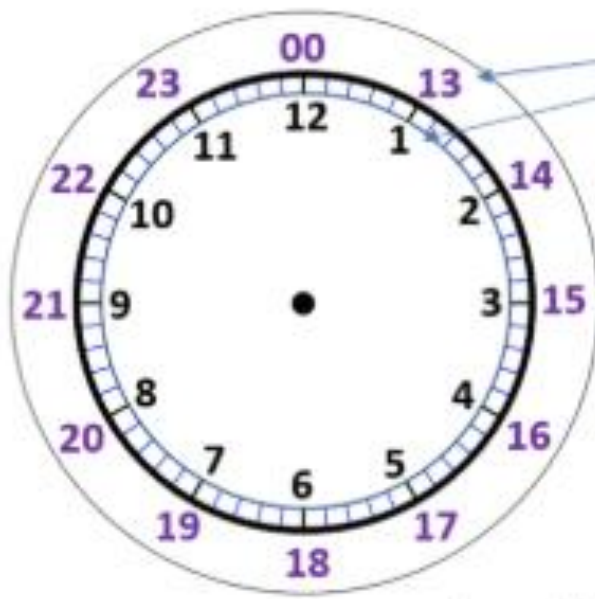
The minutes will always be after the colon.

twinkl.com



<https://www.visnos.com/demos/clock>

Using your interactive clock have a go at making these times in the example below. You will need to click on the 24 tab.



1:00pm becomes 13:00 in 24 hour time.

Examples

9:05am is 09:05 9:05pm is 21:05

7:27am is 07:27 7:27pm is 19:27

12:10am is 00:10 12:10pm is 12:10

Complete the chart, changing 12-hour
a.m. digital times into 24-hour times.

12-Hour Time	24-Hour Time
1:00 a.m.	
2:00 a.m.	
3:00 a.m.	
4:00 a.m.	
5:00 a.m.	
6:00 a.m.	
7:00 a.m.	
8:00 a.m.	
9:00 a.m.	
10:00 a.m.	
11:00 a.m.	



12-Hour Time	24-Hour Time
12:00 p.m.	
1:00 p.m.	
2:00 p.m.	
3:00 p.m.	
4:00 p.m.	
5:00 p.m.	
6:00 p.m.	
7:00 p.m.	
8:00 p.m.	
9:00 p.m.	
10:00 p.m.	
11:00 p.m.	

Topic

Prime Question: How did the Victorian period help to shape the Workington we know today?

KS2 History: Local History - A study of Local History taking account of a period of history that shaped the locality.

Friday's pictures were... ...Curwen Hall & British Steel Cooperation.

Here are two photographs of Portland Square in Workington. Have a 'good' look at them. Make a list of all the things that have stayed the same and things that have changed.

Look closely at the houses, windows, doors etc.

Do you notice anything that hasn't changed, why?



In the centre of Portland Square, there is a memorial monument. Find out: Why it is there and who are we remembering?



What other information can you find out about Portland Square?