

Ashfield Junior School

Year 3 Home Learning Tasks Summer Term Week 6

Tuesday 19th May

English

Daily Practice:

Spellingframe

Topmarks: English KS2 Look cover write check:



Punctuation

Commas are used in lists to separate words and ideas.

For example: The huge plate was piled high with bacon, egg, mushrooms, fried onions, black pudding, baked beans and tomato!

(notice that there is no comma after the final item before and)

Use commas to separate the items in a list. Put the commas into the following sentences.

- 1) We'll have two cornets with raspberry sauce a vanilla ice cream a carton of orange juice and a cup of tea please.
- 2) I'd like to order the tomato soup and egg and cress sandwich a banana smoothie and a chocolate muffin please.
- 3) I like to watch rugby on tv go to see Workington Reds play football watch my dad play cricket play tennis and I swim every week too.
- 4) Helena Thompson liked to go to agricultural shows attend Grasmere sports spend time in the garden and plant lots of flowers.
- 5) Cec Thompson was born in Co Durham lived in Yorkshire Wiltshire and Cheshire before living in Cumbria.

Challenge

As you continue to find out more facts about well-known people connected with Workington see if you can identify where the writers have used commas. See if you can write any sentences including commas which you can use later in the week for your mini biography.

24-hour Clock

Notes and Guidance

Children are introduced to telling the time on a 24-hour digital clock for the first time.

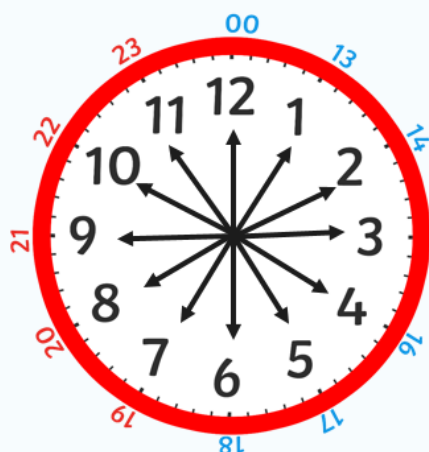
Children spend time looking at analogue and digital clocks at various times throughout the day, in order to compare what is the same and what is different.

Mathematical Talk

Using the 12-hour clock, is the time an a.m. or a p.m. time?

What will the number representing the hour be in 24-hour clock time? How do you know if it will be less than 12 or more than 12?

What will the minutes be in 24-hour time? Where can you count from? When does the number of minutes become 0 again on a 24-hour clock display?



On a 24 hour clock, once we get past 1pm we add 12 hours on to the time shown on the clock face.

twinkl.com

24 Hour Digital Clocks



24 hour digital clocks also have an hour and minute display, separated by a colon.

The hours will always be before the colon. The hours go from 0 to 23.

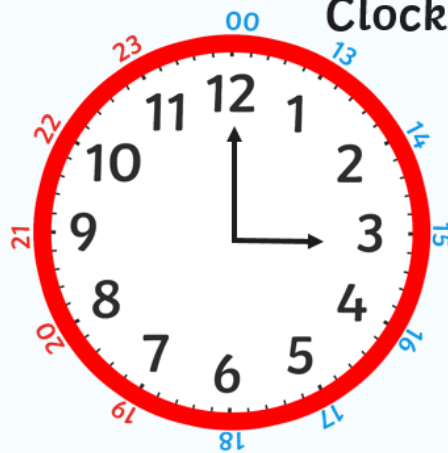
The minutes will always be after the colon.

twinkl.com



<https://www.visnos.com/demos/clock>

Converting From 12 to 24 Hour Clocks

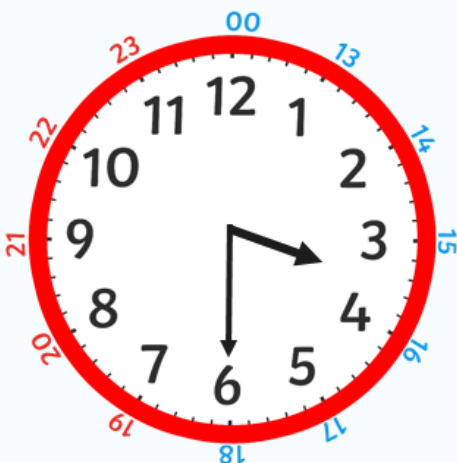


Do the clocks show the same time?

What is the same about the clocks?

What is different?

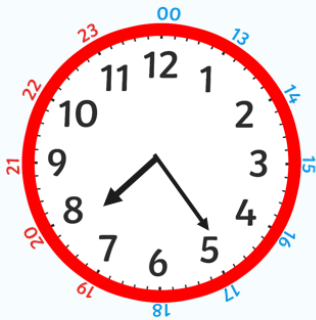
Converting From 12 to 24 Hour Clocks



What is the digital time represented by the analogue clock?

On a 24 hour clock this could be two different times, what would they be?

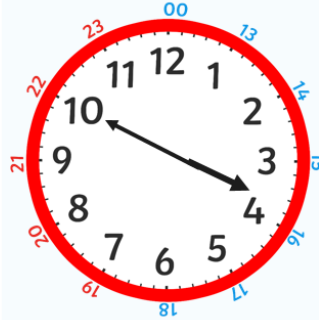
What About This One?



07:25

19:25

Feeling Confident?



03:50

15:50

Now have a go finding these 24-hour times using your clock.

12-Hour Time	24-Hour Time
2:15 a.m.	
5:30 a.m.	
9:00 a.m.	
11:15 a.m.	
6:30 a.m.	
9:45 a.m.	
11:30 a.m.	

12-Hour Time	24-Hour Time
12:30 p.m.	
6:00 p.m.	
2:15 p.m.	
4:30 p.m.	
9:00 p.m.	
7:45 p.m.	
10:00 p.m.	

Topic

This week in topic we like you to get creative either using a paint program, an app that you might already have or put your design and technology skills to good practice.

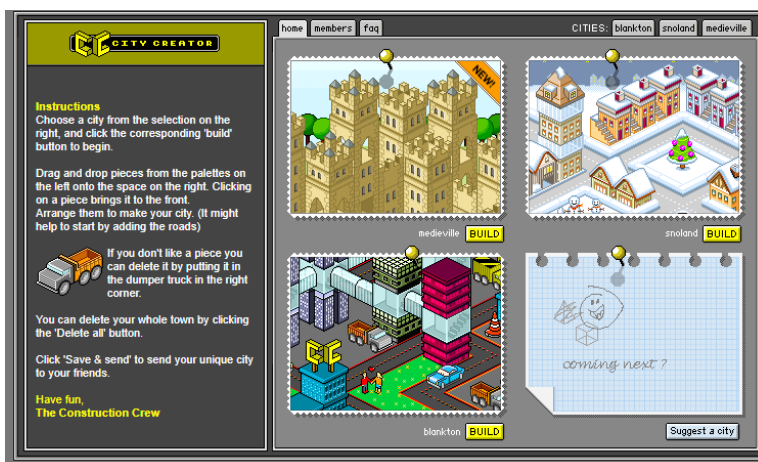
Over the last week, we have been looking at buildings around Workington. We would like you to either recreate one of those buildings or build one out of materials you have at home. If you have a device, why not try to build your own virtual city.

Here's one we made earlier! Do you recognise this building?

We would love to see your creations by the end of the week.



<http://www.citycreator.com/>



Here are some other computing programs, which you might like to have a go at this week.

