

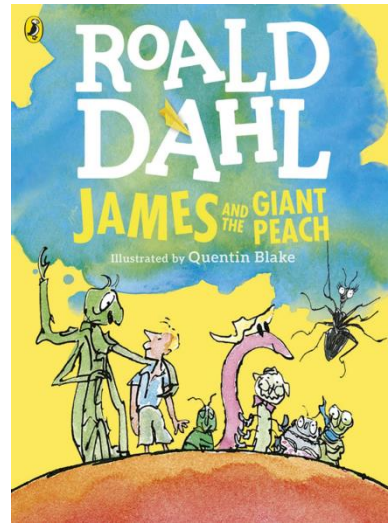
Ashfield Junior School
Year 3 Home Learning Tasks
Summer 2 Term Week 4

Monday 22nd June

English

Daily Practice:

Spellingframe



Chapters 26 and 27

Read chapters 26 and 27

Youtube:

<https://www.youtube.com/watch?v=gFoYBO5ZFwo>

(1:39:01)

Can you remember?

Check your understanding with these questions.

- 1) How does James try to help the centipede?
- 2) Why does the Old Green-Grasshopper play the 'Funeral March'?
- 3) How is travelling by aeroplane different to the journey on the peach?
- 4) What did the cloud men do?
- 5) If you were one of the creatures living in the peach, how would you feel towards the centipede?

Word Work

Think about how the characters feel in chapter 27 as the peach approaches the cloud-men. Some words that describe emotions are stronger than others.

For example, you could say James was **happy**

Or you could say James was **ecstatic**

Show how each emotion word gets stronger. Write your answers along the line. You can fill in as many words as you like between the start and the end of the line. Use the word bank below to help you.



scared



Angry



Pleased

Panicky, alarmed, nervous, petrified, fearful

Cross, furious, livid, mad, seething,

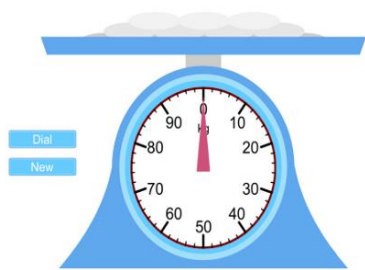
Pleased, excited, cheery, gleeful jolly

Challenge

Are any of these words new to you? Now you know what they mean, Write each one in a sentence.

Maths: Mass & Capacity

Daily Practice: TTrackstars



<https://www.teacherled.com/iresources/scales/mass/>

<https://mathsframe.co.uk/en/resources/resource/87/itp-measuring-scales>



<https://www.ictgames.com/mobilePage/mostlyPostie/index.html>



Measure Mass (2)

Notes and Guidance

Children measure the mass of objects and record them as a mixed measurement in kilograms and grams. When given a mixed measurement, children can record the mass on scales by calculating the intervals and identifying where the arrow will go.

Recap counting in different multiples to support children's reading of scales with different intervals.

Mathematical Talk

Which is heavier, 7 kilograms or 8 grams?

How is a scale like a number line?

Does drawing a number line help you to find the intervals?

Where do we use measuring mass on a daily basis?

What weight is on the scales?

How do the scales show this?



Complete the missing information.

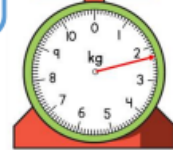


The toy car weighs 4 kg and ____ g

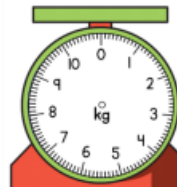
The potatoes weigh 2 kg and ____ g



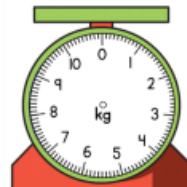
Use your own scales to measure how much objects weigh and record the mass in kg and g.



Draw an arrow on the scales to show the mass of each object.



= 1 kg and 700 g



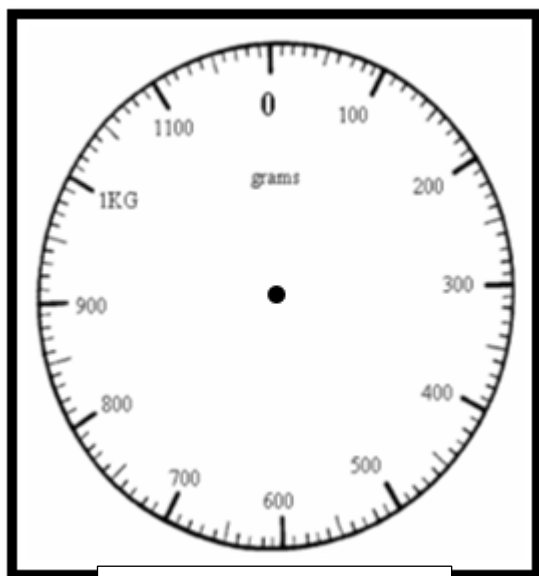
= 2 kg and 100 g

Read the scales accurately.

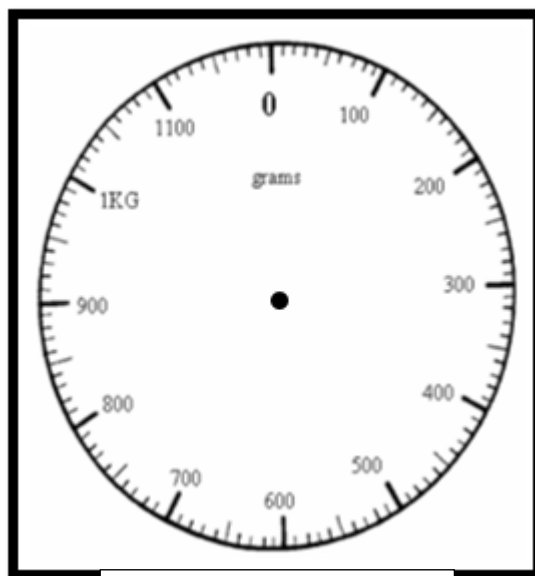




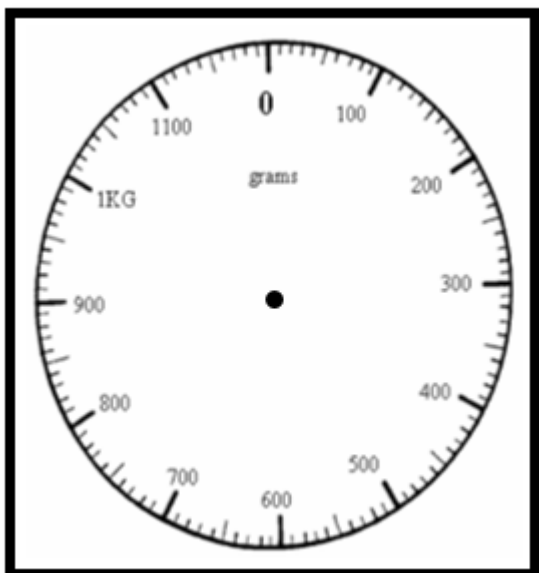
Draw arrows to show the mass.



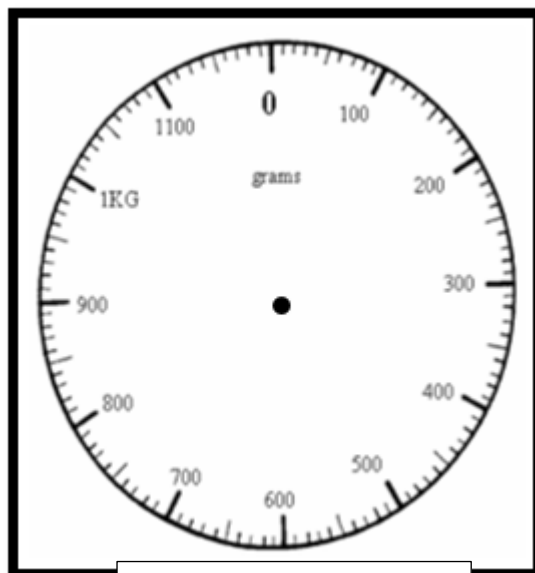
550g



780g



220g

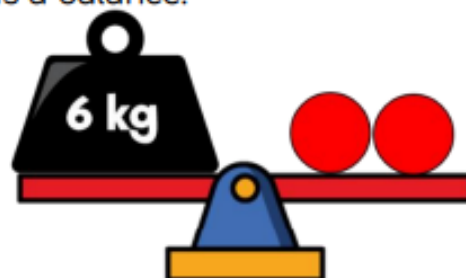


1kg 50g

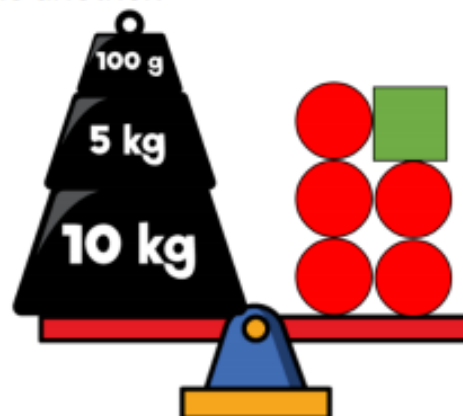
Measure Mass (2)

Reasoning and Problem Solving

Here is a balance.



Here is another.



Work out the value of



Can you create your own version for a partner?

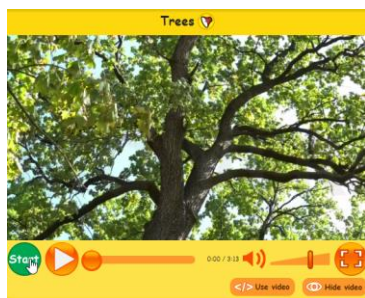
Topic: Plants

This week we are going to continue our work on plants by looking at trees.

Here are two videos from espresso to get us thinking...



https://central.espresso.co.uk/espresso/modules/news/ey_news/world/061114o_trees.html?source=search-all-all-all&source-keywords=trees



https://central.espresso.co.uk/espresso/primary_uk/subject/module/video/item1236905/grade1/module1197183/index.html?source=search-all-all-all-Videos&source-keywords=trees

When you are out and about over the next few days, collect some different types of leaves. How many different kinds can you find? How many can you identify using the OPAL tree guide?

Your tasks are to complete the 'Leaf Bingo' activity and then see if you can identify the leaves you have found using the 'Tree Identification Guide' You will find these on our Home Learning page.

There is also a guide to this on the woodland trust website:

<https://www.woodlandtrust.org.uk/trees-woods-and-wildlife/british-trees/how-to-identify-trees/>

Or you could even download the app.



