

**Ashfield Junior School**  
**Year 3 Home Learning Tasks**  
**Summer 2 Term Week 2**

**Wednesday 10<sup>th</sup> June**

**English**

**Daily Practice:**

**Spellingframe**

**Chapter 12 and 13**

Youtube: <https://www.youtube.com/watch?v=gFoYBO5ZFwo>  
(35.23)

**Comprehension Activity**

**Chapter 12**

- 1) How many feet does the centipede have?
- 2) Why did the earthworm think he was better off than the centipede?
- 3) How does the centipede get to be so big?
- 4) Why does James like the centipede?
- 5) Which character would you like to learn more about? Why?

**Chapter 13**

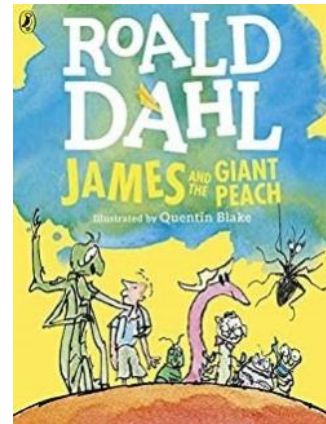
- 1) What type of beds does Miss Spider make?
- 2) Why is it so difficult for James to take off the centipede's boots?
- 3) How was James's old bed different to his new bed?
- 4) What noises does each creature make as it sleeps?
- 5) What did James see on the ceiling?
- 6) How do you think James feels about spending the night with the creatures in the peach?

**Challenge**

Imagine that you are one of the one of the creatures. Write the events from these chapters from their point of view.

Think about how the creatures might feel when they see James? Would they think he was unusual or strange or were they expecting him?

You will need to write in the 1<sup>st</sup> person ( I, me etc) Remember to write in clear sentences including capital letters and full stops.



## Maths: **MONEY**

### Daily Practice: TTrockstars



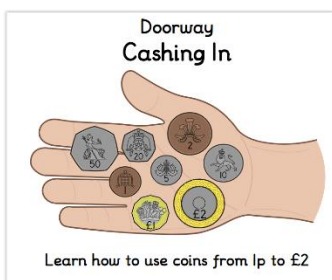
**You can choose any of these interactive games to help solve problems with money. Choose the level that is appropriate for your child** <https://www.topmarks.co.uk/money/toy-shop-money>



<https://www.topmarks.co.uk/money/coins-game>



<https://natwest.mymoneysense.com/students/students-5-8/the-change-game/>



<https://www.doorwayonline.org.uk/activities/cashing-in/cashing-in.html>



<https://natwest.mymoneysense.com/students/students-5-8/coin-cruncher/>



<https://natwest.mymoneysense.com/students/students-5-8/spot-the-coins/>

## Subtract Money

### Notes and Guidance

Children use different methods to subtract money. They will see examples where they can physically remove the coins, and examples where they will need to use their knowledge of converting money to exchange £1 for 100 pence. Children also use number lines to count on or back to calculate the difference between two amounts.

## Mathematical Talk

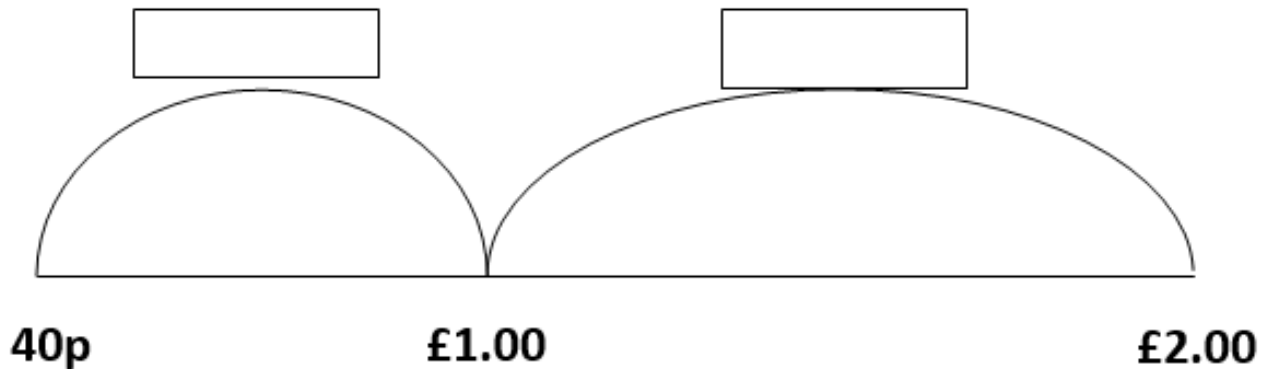
Can we make 50p in a different way to make it easier to subtract 10p physically?

Which number should I place on the number line first?

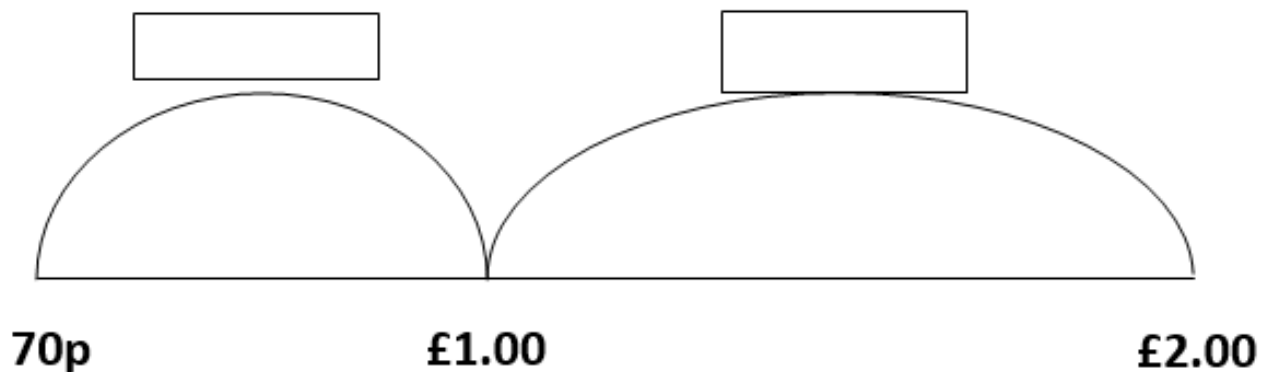
Could I count backwards on the number line?

Does this change the difference?

Do we need to exchange any pounds for pence?



$$£2.00 - 40p =$$



$$£2.00 - 70p =$$

---

50p

£2.00

$$£2.00 - 50p =$$

---

£0.60

£2.00

$$£2.00 - £0.60 =$$

I buy some grapes for £1.10 - how much change do I get?



I buy some biscuits for £1.23 - how much change do I get?



**I go to the shop with £5.00**

I spend £1.80 - how much change do I get?



I spend £2.25 - how much change do I get?



**I go to the shop with £10.00**

I spend £5.50 - how much change do I get?



I spend £6.20 - how much change do I get?



## Subtract Money

### Reasoning and Problem Solving

2. These children all think they have dropped some money on the same road at some point during the day. Some coins, shown below, were found near the bus stop.



This morning, I had £6 and 35p. Now, I only have £3 and 85p.



I had £7 and 75p this morning. Now, I can only find £5 and 60p.



I know that I had £5 and 20p. I only have £3 and 15p now.

Which child dropped this money?

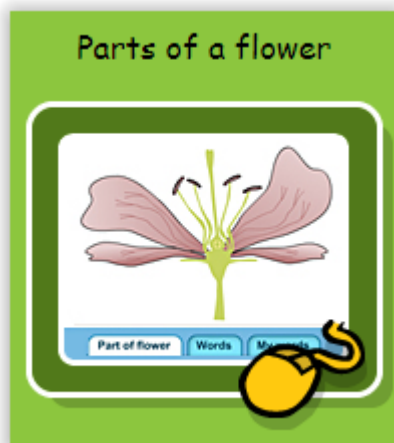
## Topic: Plants

Pupils should be taught to:

- ✚ explore the part that flowers play in the life cycle of flowering plants, including pollination, seed formation and seed dispersal.

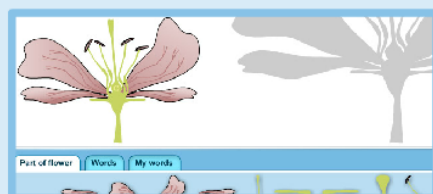
<https://www.bbc.co.uk/programmes/articles/Mf5rhbTkHLZ3fbJzScyDvC/primary-science-plants>

### 3. The anatomy of the flower

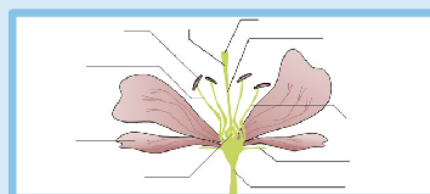


Discovery Education  
student9677  
ashfield

KS2: Science  
Plant Life Cycles  
Activities



Build a flower

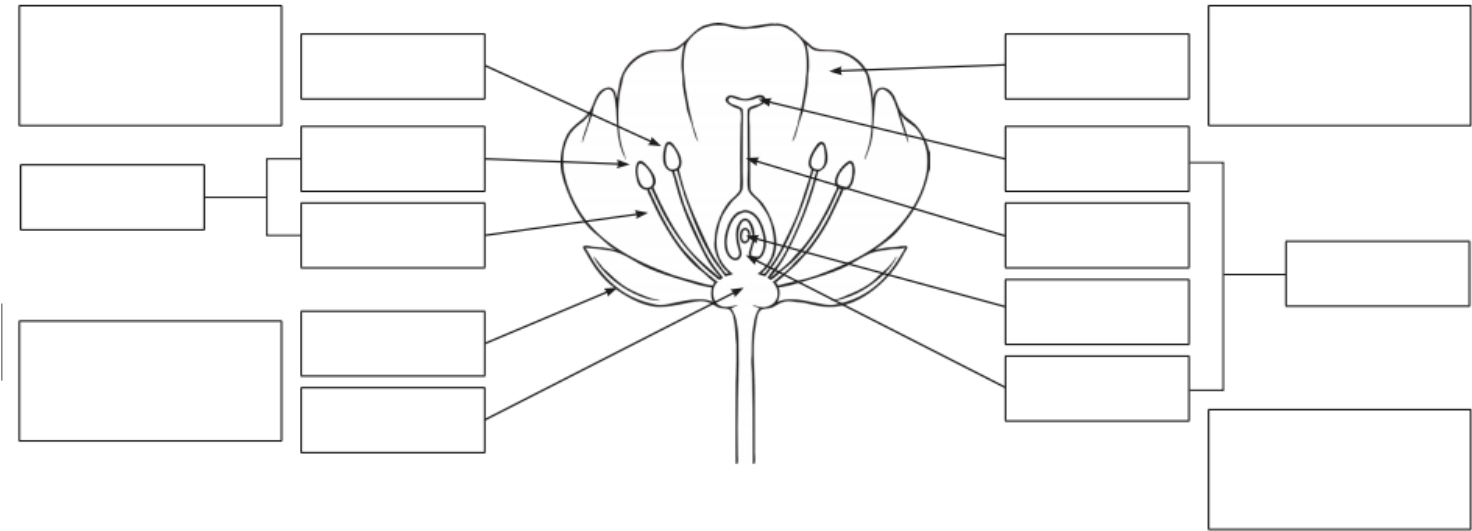


Label the parts

Complete these activities.

# Structure and Function of a Flower **Cut and Stick Activity**

Cut out and glue the labels onto the diagram to show the different parts and functions of the flower.



Structure and Function of a Flower **Cut and Stick Activity**

Cut out the labels below and stick them onto the diagram to show the different parts of the flower.

pollen	carpel	petal	stigma	style	filament
stamen	receptacle	sepal	anther	ovary	ovule

Then cut out the descriptions below and stick them onto the diagram to show the different functions of the main parts of a flower.

This is the male part of the flower. It contains pollen grains which produce male sex cells.	This is the female part of the flower. The female sex cells are contained in the ovules.	These are often brightly coloured to attract insects for pollination.	These small leaf-like parts protect the flower inside the bud.
--	--	---	--