

## Home Learning Friday 5th March (last one!)

# We can't wait to see you all on Monday

Read daily

Watch Newsround BBC

[https://www.bbc.co.uk/newsround/news/watch\\_newsround](https://www.bbc.co.uk/newsround/news/watch_newsround)

### **Online learning:**

TTRock Stars

Spellingframe

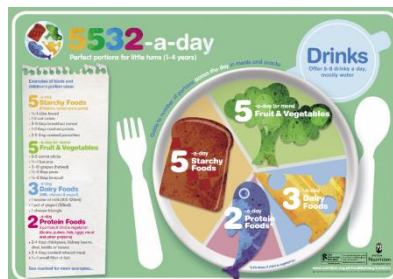
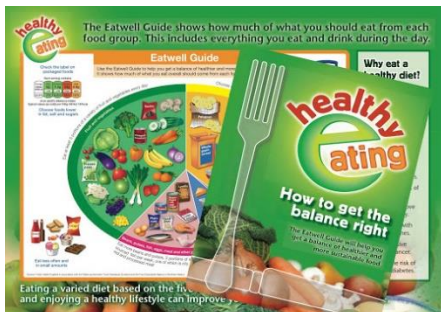
**MATHS:** Some interactive games to have a go at!

<https://www.topmarks.co.uk/maths-games/hit-the-button>

<https://www.topmarks.co.uk/times-tables/coconut-multiples>

Continue with any of the times table practical and online games.

## **English**



At school, we are still working on writing our leaflets to help children understand why eating a balanced diet is so important.

We'd like you to continue with this task too. Remember to include information about why the different food groups are important and what each group provides the body with. You should also include pictures

If you have completed this then you could have a go at the comprehension 'Healthy Eating' This will also contain the information you should have in your own information leaflet.

# Enquiry & Investigation

## Science: Reflective Surfaces

Recap:

Last week we were looking at Light and Dark. Finding out what is light and light sources. We need light in order to see things and that dark is the absence of light. Light travels in straight lines.



The moon is not a light source because it does not make its own light. We can see the moon because light from the sun reflects off it (bounces off it) back to the earth.



The window is not a light source. It is an opening that lets the light from the sun or other light source into the room.



The mirror is not a source of light because it does not make its own light. It reflects light from other sources.

- Today's New Learning: To investigate which surfaces reflect light.

<https://www.bbc.co.uk/bitesize/clips/ztcg9j6>

### The use of reflective materials for safety

Part of Science | Light and dark

Duration 01:52



### While you are watching, think about:

- What does it look like if a material reflects light well?
- Which colours do you think reflect most light?
- What are reflective materials useful for?

## What is reflection?

Part of [Science](#) | [Light and dark](#)

[+ Add to My Bitesize](#)

When you have watched this video clip try the Quiz further down on the website



Some surfaces and materials reflect light well. Other materials do not reflect light well.

Reflective surfaces and materials can be very useful:

- Reflective strips on coats or bags mean you can be seen at night. They are also useful for firefighters or builders who may work in a dark and dangerous environment.
- 'Cat's Eyes' help drivers see the road by reflecting light from headlamps.
- Mirrors let us see ourselves, and are also useful in cars, to allow drivers to see behind them.
- Retro-reflectors are used for road signs so that drivers can see the signs from their car.

Can you think of any other uses?

## Testing Reflective Materials



In order to test the materials, you will need to make a reflection tester.

Attach a piece of white card to a torch:

1. Cut a hole in the centre of the card and push the torch through so that the card fits snugly around the torch without you having to hold it.
2. Shine the torch at the material you are testing.
3. If the material reflects light well, you will see the reflected light shine through the white card and light it up.



Go around your house and test different surfaces/materials to see if they are reflective.

Here are some examples:

- Your coat
- A badge on your coat
- Your school bag
- A wall
- Kitchen foil
- A mirror
- Sofa
- Jumper

**Which surfaces or materials were the most reflective?**

**Designit:** Design a poster to tell people how to dress to be seen in the dark.  
Explain how to choose clothes that reflect light well.

**Spotit:** If you are going somewhere in the car when it is dark, look out for road signs, bike lights, cat's eyes or clothes that reflect light well. How do these help the driver?